

Guitar Initial

All to be performed *mf* with RH fingering: *im* (or *mi*), *apoyando* or *tirando* at examiner's choice unless otherwise stated, ♩ = 60.

Major scales of C and G (range of a fifth from tonic to dominant)

Minor scale of A (range of a fifth from tonic to dominant)

Phrygian scale on E (i.e. all notes natural, including F) (1 octave; with RH fingering: *p*; *tirando*)

C major scale

♩ = 60

8

G major scale

♩ = 60

8

A minor scale

♩ = 60

8

Phrygian scale on E

♩ = 60

8

Guitar Grade 1

All to be performed *mf* with RH fingering: *im* (or *mi*) unless otherwise stated.

Scales to be performed at ♩ = 100; arpeggios to be performed at ♩ = 80.

Major scales of C and G (1 octave; apoyando or tirando at examiner's choice)

Major scale of F (1 octave; with RH fingering: *p*; tirando only)

Dorian scale on D (all notes natural, including B) (1 octave; tirando only)

Arpeggios of C major, and E minor starting on the 4th string (1 octave; tirando only)

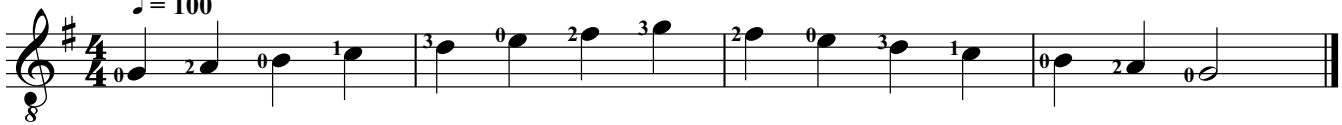
C major scale

♩ = 100



G major scale

♩ = 100



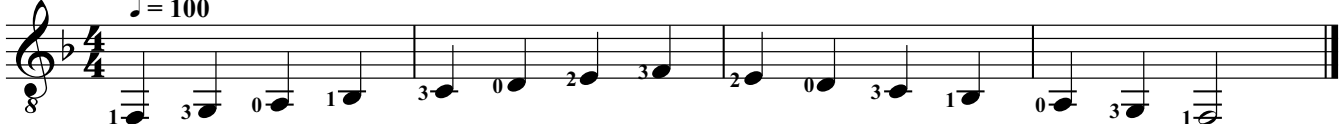
Dorian scale on D

♩ = 100



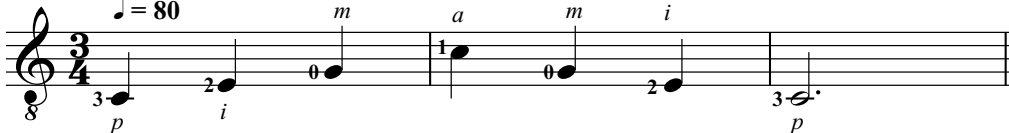
F major scale

♩ = 100



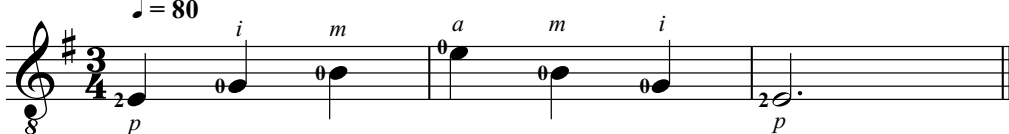
C major arpeggio

♩ = 80



E minor arpeggio

♩ = 80



Guitar Grade 2

All to be performed *mf* and *p* with RH fingering: *im* (or *mi*) Scales: *apoyando* or *tirando* at examiner's choice; arpeggio and chord sequence: *tirando*.

Scales to be performed at ♩ = 126; arpeggio and arpeggiated chord sequence to be performed at ♩ = 100.

Major scales of C and D (1 octave)

Minor scales of A (in natural *and* harmonic *and* melodic forms)

Arpeggio of E minor starting on the 6th string (1 octave)

Arpeggiated D major chord sequence: ii-V-I

C major scale

♩ = 126

D major scale

♩ = 126

A natural minor scale

♩ = 126

A harmonic minor scale

♩ = 126

A melodic minor scale

♩ = 126

Arpeggio of E minor

♩ = 100

Arpeggiated D major chord sequence: ii-V-I

♩ = 100

Guitar Grade 3

All to be performed *f*, *mf* and *p* in straight and swung rhythms. RH fingering: *im* (or *mi*) and *ma* (or *am*)
 Scales: apoyando or tirando at examiner's choice; scale in broken 3rds, arpeggio and exercise: tirando.
 Scales to be performed at ♩ = 72; arpeggio at ♩ = 60; half barré exercise at ♩ = 60.

Major scale of C (two octaves)

Minor scales of D, in natural and harmonic and melodic forms (two octaves)

Major scale of C in broken thirds (1 octave)

Diminished arpeggio on A (1 octave)

Half Barré exercise

C major scale
 ♩ = 72

D natural minor scale
 ♩ = 72

D harmonic minor scale
 ♩ = 72

D melodic minor scale
 ♩ = 72

C major scale in broken thirds
 ♩ = 72

Diminished arpeggio on A
 ♩ = 60

Half barré exercise
 ♩ = 60

Guitar Grade 4

All to be performed *f*, *mf* and *p* in straight and swung rhythms. RH fingering: *im* (or *mi*) and *ma* (or *am*)

Scales: *apoyando* or *tirando* at examiner's choice; arpeggios: *tirando*.

Scales to be performed at ♩ = 84; arpeggios to be performed at ♩ = 54 (all in quavers).

Major scales of E and A (two octaves)

Minor scale of B, in natural and harmonic and melodic forms (two octaves)

Arpeggios of D major and B minor (two octaves)

Dominant 7th arpeggio in the key of D, starting on A (two octaves)

A major scale

♩ = 84

E major scale

♩ = 84

B natural minor scale

♩ = 84

B harmonic minor scale

♩ = 84

B melodic minor scale

♩ = 84

D major arpeggio

♩ = 54

B minor arpeggio

♩ = 54

Dominant seventh arpeggio in D

♩ = 54

Guitar Grade 5

All to be performed *f*, *mf* and *p* in straight and swung rhythms. RH fingering: *im* (or *mi*) and *ma* (or *am*). Tone: *norm.* and *pont.*
 Scales: *apoyando* or *tirando* at examiner's choice; arpeggios, scale in 3rds and Full Barré sequence: *tirando*.

- Major scales of B♭ and F (two octaves)
- Pentatonic major scale on C (two octaves)
- Arpeggio of B♭ major (two octaves)
- Dominant 7th arpeggio in the key of E♭, starting on B♭ (two octaves)
- Major scale of B♭ in thirds (one octave)
- Full Barré sequence

B♭ major scale

♩ = 96

F major scale

♩ = 96

Pentatonic major scale on C

♩ = 96

B♭ major arpeggio

♩ = 60

Dominant seventh arpeggio in E♭

♩ = 60

B♭ major scale in thirds

♩ = 72

Full barré sequence

♩ = 60

Guitar Grade 6

All to be performed *f*, *mf* and *p* in straight and swung and triplet rhythms (triplet scales should be performed as follows: 2 octaves: first note crotchet followed by running triplets; 3 octaves: running triplets from first note). RH fingering: *im* (or *mi*) and *ma* (or *am*) and *imam*.

Tone: *norm.* and *pont.* and with a change of colour (*norm.-pont.-norm.*) throughout the scale.

Scales: *apoyando* or *tirando* at examiner's choice; arpeggios and scales in 3rds: *tirando*.

Scales to be performed at ♩ = 100; arpeggios and scales in 3rds to be performed at ♩ = 80.

Major scales of C (2 octaves) and G (3 octaves)

Minor scales of C (2 octaves) and G (3 octaves), in natural and harmonic and melodic forms

Major arpeggios of C (2 octaves) and G (3 octaves)

Minor arpeggios of C (2 octaves) and G (3 octaves)

Diminished 7th arpeggios on C (2 octaves) and G (3 octaves)

Dominant 7th arpeggios in the keys of F, starting on C (two octaves) and G, starting on D (3 octaves)

Major scales of C and G in 3rds (2 octaves)

Chromatic scale in octaves, starting on G (1 octave)

C major scale

♩ = 100

Musical notation for C major scale, 4/4 time, 2 octaves. The scale is written in treble clef. It starts on C4 (middle C) and goes up to C6. The notation includes fingering numbers (1-4) and Roman numerals II and V. The tempo is marked as ♩ = 100.

C natural minor scale

♩ = 100

Musical notation for C natural minor scale, 4/4 time, 2 octaves. The scale is written in treble clef with one flat (Bb). It starts on C4 and goes down to C2. The notation includes fingering numbers (1-4) and Roman numerals V, VI, and V. The tempo is marked as ♩ = 100.

C harmonic minor scale

♩ = 100

Musical notation for C harmonic minor scale, 4/4 time, 2 octaves. The scale is written in treble clef with one flat (Bb). It starts on C4 and goes down to C2. The notation includes fingering numbers (1-4) and Roman numerals III, VI, and III. The tempo is marked as ♩ = 100.

C melodic minor scale

♩ = 100

Musical notation for C melodic minor scale, 4/4 time, 2 octaves. The scale is written in treble clef with one flat (Bb). It starts on C4 and goes down to C2. The notation includes fingering numbers (1-4) and Roman numerals III, VII, and III. The tempo is marked as ♩ = 100.

G major scale

♩ = 100

Musical notation for G major scale, 4/4 time, 3 octaves. The scale is written in treble clef with two sharps (F# and C#). It starts on G4 and goes up to G7. The notation includes fingering numbers (1-4) and Roman numerals II, VII, and XII. The tempo is marked as ♩ = 100.

Musical notation for G major scale, 4/4 time, 3 octaves. The scale is written in treble clef with two sharps (F# and C#). It starts on G4 and goes up to G7. The notation includes fingering numbers (1-4) and Roman numerals VII and II. The tempo is marked as ♩ = 100.

Guitar Grade 6 continued

G natural minor scale

♩ = 100

III VII X XII X

G harmonic minor scale

♩ = 100

III VII X XIII X

G melodic minor scale

♩ = 100

III VII VIII XII X

C major arpeggio

♩ = 80

CV

C minor arpeggio

♩ = 80

III VII III

Guitar Grade 6 continued

G major arpeggio
♩ = 80

G minor arpeggio
♩ = 80

Diminished 7th arpeggio on C
♩ = 80

Diminished 7th arpeggio on G
♩ = 80

Dominant 7th arpeggio in F
♩ = 80

Dominant 7th arpeggio in C
♩ = 80

C major scale in 3rds
♩ = 80

Guitar Grade 7 continued

A natural minor scale

♩ = 112

First system of A natural minor scale. Treble clef, 4/4 time. Notes: A2, B2, C3, D3, E3, F3, G3, A3. Fingering: 1, 3, 4, 1, 2, 3, 4, 1. Position markers: V, IX, X, XIV, X.

Second system of A natural minor scale. Treble clef, 4/4 time. Notes: B2, C3, D3, E3, F3, G3, A3, B3. Fingering: 3, 1, 4, 3, 1, 4, 2, 1. Position markers: IX, V.

A harmonic minor scale

♩ = 112

First system of A harmonic minor scale. Treble clef, 4/4 time. Notes: A2, B2, C3, D3, E3, F#3, G3, A3. Fingering: 1, 3, 4, 1, 2, 3, 2, 1. Position markers: V, IX, XII, XV, XII.

Second system of A harmonic minor scale. Treble clef, 4/4 time. Notes: B2, C3, D3, E3, F#3, G3, A3, B3. Fingering: 1, 4, 2, 1, 3, 2, 1, 4. Position markers: IX, V.

A melodic minor scale

♩ = 112

First system of A melodic minor scale. Treble clef, 4/4 time. Notes: A2, B2, C3, D3, E3, F#3, G#3, A3. Fingering: 1, 3, 4, 1, 2, 3, 1, 3. Position markers: V, IX, XIV, XII.

Second system of A melodic minor scale. Treble clef, 4/4 time. Notes: B2, C3, D3, E3, F#3, G#3, A3, B3. Fingering: 1, 4, 2, 1, 4, 2, 1, 4. Position markers: VII, V.

Pentatonic major scale on D

♩ = 112

Musical notation for Pentatonic major scale on D. Treble clef, 4/4 time. Notes: D2, E2, F#2, G2, A2. Fingering: 4, 1, 3, 1, 4, 1, 4, 1. Position marker: VII.

Mixolydian scale on A

♩ = 112

First system of Mixolydian scale on A. Treble clef, 4/4 time. Notes: A2, B2, C3, D3, E3, F3, G3, A3. Fingering: 2, 4, 1, 2, 4, 1, 2, 4. Position markers: IV, IX, XIV.

Second system of Mixolydian scale on A. Treble clef, 4/4 time. Notes: B2, C3, D3, E3, F3, G3, A3, B3. Fingering: 4, 2, 1, 4, 2, 4, 3, 1. Position markers: IX, IV.

Guitar Grade 7 continued

D major arpeggio

♩ = 92

Musical notation for D major arpeggio in 4/4 time. The piece consists of two measures. The first measure contains a descending eighth-note arpeggio: D4 (II), C#4 (3), B3 (1/2 CVII), A3 (3), G3 (4), F#3 (3), E3 (1/2 CVII), D3 (II). The second measure contains a whole note D3. Fingering numbers 1-4 are shown below the notes.

D minor arpeggio

♩ = 92

Musical notation for D minor arpeggio in 4/4 time. The piece consists of two measures. The first measure contains a descending eighth-note arpeggio: D4 (V), C4 (3), B3 (VIII), A3 (3), G3 (V), F3 (3), E3 (3), D3 (1). The second measure contains a whole note D3. Fingering numbers 1-4 are shown below the notes.

A major arpeggio

♩ = 92

Musical notation for A major arpeggio in 4/4 time. The piece consists of two measures. The first measure contains a descending eighth-note arpeggio: A4 (V), G#4 (3), F#4 (IX), E4 (3), D4 (XII), C#4 (4), B4 (1), A4 (1), G#4 (2), F#4 (IX), E4 (3), D4 (3), C#4 (3), B4 (V), A4 (1). The second measure contains a whole note A4. Fingering numbers 1-4 are shown below the notes.

A minor arpeggio

♩ = 92

Musical notation for A minor arpeggio in 4/4 time. The piece consists of two measures. The first measure contains a descending eighth-note arpeggio: A4 (V), G4 (3), F4 (VIII), E4 (3), D4 (XII), C4 (4), B4 (1), A4 (1), G4 (2), F4 (VIII), E4 (3), D4 (3), C4 (3), B4 (V), A4 (1). The second measure contains a whole note A4. Fingering numbers 1-4 are shown below the notes.

Diminished 7th arpeggio on D

♩ = 92

Musical notation for diminished 7th arpeggio on D in 4/4 time. The piece consists of two measures. The first measure contains a descending eighth-note arpeggio: D4 (V), C#4 (VI), B3 (VII), A3 (b3), G3 (1), F#3 (4), E3 (1), D3 (b3), C#3 (4), B2 (VI), A2 (V), G2 (1), F#2 (4), E2 (1), D2 (1). The second measure contains a whole note D3. Fingering numbers 1-4 are shown below the notes.

Dominant 7th arpeggio in G

♩ = 92

Musical notation for dominant 7th arpeggio in G in 4/4 time. The piece consists of two measures. The first measure contains a descending eighth-note arpeggio: G4 (IV), F#4 (CVII), E4 (1), D4 (4), C#4 (2), B4 (4), A4 (1), G4 (1), F#4 (IV), E4 (1), D4 (2), C#4 (4), B4 (1), A4 (2), G4 (2). The second measure contains a whole note G4. Fingering numbers 1-4 are shown below the notes.

Diminished 7th arpeggio on A

♩ = 92

Musical notation for diminished 7th arpeggio on A in 4/4 time. The piece consists of two measures. The first measure contains a descending eighth-note arpeggio: A4 (V), G#4 (1), F#4 (b4), E4 (4), D#4 (1), C#4 (4), B4 (1), A4 (b4), G#4 (4), F#4 (1), E4 (4), D#4 (1), C#4 (4), B4 (1), A4 (1). The second measure contains a whole note A4. Fingering numbers 1-4 are shown below the notes.

Dominant 7th arpeggio in D

♩ = 92

Musical notation for dominant 7th arpeggio in D in 4/4 time. The piece consists of two measures. The first measure contains a descending eighth-note arpeggio: D4 (V), C#4 (IX), B3 (3), A3 (4), G#3 (2), F#3 (4), E3 (1), D3 (1), C#3 (XIV), B3 (4), A3 (2), G#3 (IX), F#3 (4), E3 (1), D3 (2), C#3 (3), B3 (3), A3 (V), G#3 (2), F#3 (4), E3 (1), D3 (1). The second measure contains a whole note D3. Fingering numbers 1-4 are shown below the notes.

Guitar Grade 7 continued

D major scale in 3rds

♩ = 92

II

Musical notation for the D major scale in 3rds. The piece is in 4/4 time with a key signature of two sharps (F# and C#). It begins with a second fret barre (II) and consists of 16 measures of eighth-note triplets. The notes are D, E, F#, G, A, B, C#, and D, repeated in ascending and descending order. Fingering numbers (1-3) are provided for each note.

D minor scale in 3rds

♩ = 92

II

Musical notation for the D minor scale in 3rds. The piece is in 4/4 time with a key signature of one flat (Bb). It begins with a second fret barre (II) and consists of 16 measures of eighth-note triplets. The notes are D, E, F, G, A, Bb, C, and D, repeated in ascending and descending order. Fingering numbers (1-3) are provided for each note.

A major scale in 3rds

♩ = 92

Musical notation for the A major scale in 3rds. The piece is in 4/4 time with a key signature of three sharps (F#, C#, G#). It consists of 16 measures of eighth-note triplets. The notes are A, B, C#, D, E, F#, G#, and A, repeated in ascending and descending order. Fingering numbers (1-3) are provided for each note.

A minor scale in 3rds

♩ = 92

Musical notation for the A minor scale in 3rds. The piece is in 4/4 time with a key signature of no sharps or flats. It consists of 16 measures of eighth-note triplets. The notes are A, B, C, D, E, F, G, and A, repeated in ascending and descending order. Fingering numbers (1-3) are provided for each note.

Guitar Grade 8 continued

B \flat melodic minor scale
 ♩ = 126

VI X XI XV XIII

F major scale
 ♩ = 126

V I

F natural minor scale
 ♩ = 126

VI XI VI V

F harmonic minor scale
 ♩ = 126

VIII XI VIII V

F melodic minor scale
 ♩ = 126

VI X VIII VI V

Mixolydian scale on B \flat
 ♩ = 126

V X XV

X

X V

Guitar Grade 8 continued

Mixolydian scale on F

♩ = 126

Musical notation for the Mixolydian scale on F in 4/4 time. The scale is written on a single staff with a treble clef and a key signature of one flat (Bb). The tempo is marked as ♩ = 126. The scale consists of the notes F, G, A, Bb, C, D, E, F. The notation includes fingering numbers (1-4) and guitar-specific markings: 'V' for barre, 'X' for a barre on the 10th fret, and 'V' for a barre on the 5th fret. The piece concludes with a whole note F.

Bb major arpeggio

♩ = 100

Musical notation for the Bb major arpeggio in 4/4 time. The tempo is marked as ♩ = 100. The arpeggio is written on a single staff with a treble clef and a key signature of two flats (Bb, Eb). The notes are Bb, D, F, G, Ab, Bb. The notation includes fingering numbers (1-4), guitar-specific markings (VI, X, VI), and articulation marks (p, a, i, m). The piece concludes with a whole note Bb.

Bb minor arpeggio

♩ = 100

Musical notation for the Bb minor arpeggio in 4/4 time. The tempo is marked as ♩ = 100. The arpeggio is written on a single staff with a treble clef and a key signature of three flats (Bb, Eb, Ab). The notes are Bb, D, F, G, Ab, Bb. The notation includes fingering numbers (1-4), guitar-specific markings (VI, IX, VI), and articulation marks (p, a, i, m). The piece concludes with a whole note Bb.

F major arpeggio

♩ = 100

Musical notation for the F major arpeggio in 4/4 time. The tempo is marked as ♩ = 100. The arpeggio is written on a single staff with a treble clef and a key signature of one flat (Bb). The notes are F, A, C, D, E, F. The notation includes fingering numbers (1-4), guitar-specific markings (V, V), and articulation marks (p, i, m). The piece concludes with a whole note F.

F minor arpeggio

♩ = 100

Musical notation for the F minor arpeggio in 4/4 time. The tempo is marked as ♩ = 100. The arpeggio is written on a single staff with a treble clef and a key signature of two flats (Bb, Eb). The notes are F, Ab, C, D, Eb, F. The notation includes fingering numbers (1-4), guitar-specific markings (V, VIII, V), and articulation marks (p, a, i, m). The piece concludes with a whole note F.

Diminished 7th arpeggio on Bb

♩ = 100

Musical notation for the diminished 7th arpeggio on Bb in 4/4 time. The tempo is marked as ♩ = 100. The arpeggio is written on a single staff with a treble clef and a key signature of two flats (Bb, Eb). The notes are Bb, D, F, Ab, Bb, D, F, Ab. The notation includes fingering numbers (1-4) and guitar-specific markings (VI). The piece concludes with a whole note Bb.

Dominant 7th arpeggio in Eb

♩ = 100

Musical notation for the dominant 7th arpeggio in Eb in 4/4 time. The tempo is marked as ♩ = 100. The arpeggio is written on a single staff with a treble clef and a key signature of three flats (Bb, Eb, Ab). The notes are Eb, G, Bb, D, Eb, G, Bb, D. The notation includes fingering numbers (1-4), guitar-specific markings (VI, X, X, VI), and articulation marks (1). The piece concludes with a whole note Eb.

Guitar Grade 8 continued

Diminished 7th arpeggio on F

$\text{♩} = 100$

Musical notation for a Diminished 7th arpeggio on F in 4/4 time. The piece is divided into two measures. The first measure contains three groups of notes, labeled I, II, and III, with fingerings 1-4, 1-4, and 1-4 respectively. The second measure contains two groups of notes, labeled II and I, with fingerings 1-4 and 1-4. The notes are: F4, Ab4, Bb4, C5, D5, Eb5, F5, G5, Ab5, Bb5, C6, D6, Eb6, F6, G6, Ab6, Bb6, C7, D7, Eb7, F7, G7, Ab7, Bb7, C8, D8, Eb8, F8, G8, Ab8, Bb8, C9, D9, Eb9, F9, G9, Ab9, Bb9, C10, D10, Eb10, F10, G10, Ab10, Bb10, C11, D11, Eb11, F11, G11, Ab11, Bb11, C12, D12, Eb12, F12, G12, Ab12, Bb12, C13, D13, Eb13, F13, G13, Ab13, Bb13, C14, D14, Eb14, F14, G14, Ab14, Bb14, C15, D15, Eb15, F15, G15, Ab15, Bb15, C16, D16, Eb16, F16, G16, Ab16, Bb16, C17, D17, Eb17, F17, G17, Ab17, Bb17, C18, D18, Eb18, F18, G18, Ab18, Bb18, C19, D19, Eb19, F19, G19, Ab19, Bb19, C20, D20, Eb20, F20, G20, Ab20, Bb20, C21, D21, Eb21, F21, G21, Ab21, Bb21, C22, D22, Eb22, F22, G22, Ab22, Bb22, C23, D23, Eb23, F23, G23, Ab23, Bb23, C24, D24, Eb24, F24, G24, Ab24, Bb24, C25, D25, Eb25, F25, G25, Ab25, Bb25, C26, D26, Eb26, F26, G26, Ab26, Bb26, C27, D27, Eb27, F27, G27, Ab27, Bb27, C28, D28, Eb28, F28, G28, Ab28, Bb28, C29, D29, Eb29, F29, G29, Ab29, Bb29, C30, D30, Eb30, F30, G30, Ab30, Bb30, C31, D31, Eb31, F31, G31, Ab31, Bb31, C32, D32, Eb32, F32, G32, Ab32, Bb32, C33, D33, Eb33, F33, G33, Ab33, Bb33, C34, D34, Eb34, F34, G34, Ab34, Bb34, C35, D35, Eb35, F35, G35, Ab35, Bb35, C36, D36, Eb36, F36, G36, Ab36, Bb36, C37, D37, Eb37, F37, G37, Ab37, Bb37, C38, D38, Eb38, F38, G38, Ab38, Bb38, C39, D39, Eb39, F39, G39, Ab39, Bb39, C40, D40, Eb40, F40, G40, Ab40, Bb40, C41, D41, Eb41, F41, G41, Ab41, Bb41, C42, D42, Eb42, F42, G42, Ab42, Bb42, C43, D43, Eb43, F43, G43, Ab43, Bb43, C44, D44, Eb44, F44, G44, Ab44, Bb44, C45, D45, Eb45, F45, G45, Ab45, Bb45, C46, D46, Eb46, F46, G46, Ab46, Bb46, C47, D47, Eb47, F47, G47, Ab47, Bb47, C48, D48, Eb48, F48, G48, Ab48, Bb48, C49, D49, Eb49, F49, G49, Ab49, Bb49, C50, D50, Eb50, F50, G50, Ab50, Bb50, C51, D51, Eb51, F51, G51, Ab51, Bb51, C52, D52, Eb52, F52, G52, Ab52, Bb52, C53, D53, Eb53, F53, G53, Ab53, Bb53, C54, D54, Eb54, F54, G54, Ab54, Bb54, C55, D55, Eb55, F55, G55, Ab55, Bb55, C56, D56, Eb56, F56, G56, Ab56, Bb56, C57, D57, Eb57, F57, G57, Ab57, Bb57, C58, D58, Eb58, F58, G58, Ab58, Bb58, C59, D59, Eb59, F59, G59, Ab59, Bb59, C60, D60, Eb60, F60, G60, Ab60, Bb60, C61, D61, Eb61, F61, G61, Ab61, Bb61, C62, D62, Eb62, F62, G62, Ab62, Bb62, C63, D63, Eb63, F63, G63, Ab63, Bb63, C64, D64, Eb64, F64, G64, Ab64, Bb64, C65, D65, Eb65, F65, G65, Ab65, Bb65, C66, D66, Eb66, F66, G66, Ab66, Bb66, C67, D67, Eb67, F67, G67, Ab67, Bb67, C68, D68, Eb68, F68, G68, Ab68, Bb68, C69, D69, Eb69, F69, G69, Ab69, Bb69, C70, D70, Eb70, F70, G70, Ab70, Bb70, C71, D71, Eb71, F71, G71, Ab71, Bb71, C72, D72, Eb72, F72, G72, Ab72, Bb72, C73, D73, Eb73, F73, G73, Ab73, Bb73, C74, D74, Eb74, F74, G74, Ab74, Bb74, C75, D75, Eb75, F75, G75, Ab75, Bb75, C76, D76, Eb76, F76, G76, Ab76, Bb76, C77, D77, Eb77, F77, G77, Ab77, Bb77, C78, D78, Eb78, F78, G78, Ab78, Bb78, C79, D79, Eb79, F79, G79, Ab79, Bb79, C80, D80, Eb80, F80, G80, Ab80, Bb80, C81, D81, Eb81, F81, G81, Ab81, Bb81, C82, D82, Eb82, F82, G82, Ab82, Bb82, C83, D83, Eb83, F83, G83, Ab83, Bb83, C84, D84, Eb84, F84, G84, Ab84, Bb84, C85, D85, Eb85, F85, G85, Ab85, Bb85, C86, D86, Eb86, F86, G86, Ab86, Bb86, C87, D87, Eb87, F87, G87, Ab87, Bb87, C88, D88, Eb88, F88, G88, Ab88, Bb88, C89, D89, Eb89, F89, G89, Ab89, Bb89, C90, D90, Eb90, F90, G90, Ab90, Bb90, C91, D91, Eb91, F91, G91, Ab91, Bb91, C92, D92, Eb92, F92, G92, Ab92, Bb92, C93, D93, Eb93, F93, G93, Ab93, Bb93, C94, D94, Eb94, F94, G94, Ab94, Bb94, C95, D95, Eb95, F95, G95, Ab95, Bb95, C96, D96, Eb96, F96, G96, Ab96, Bb96, C97, D97, Eb97, F97, G97, Ab97, Bb97, C98, D98, Eb98, F98, G98, Ab98, Bb98, C99, D99, Eb99, F99, G99, Ab99, Bb99, C100, D100, Eb100, F100, G100, Ab100, Bb100, C101, D101, Eb101, F101, G101, Ab101, Bb101, C102, D102, Eb102, F102, G102, Ab102, Bb102, C103, D103, Eb103, F103, G103, Ab103, Bb103, C104, D104, Eb104, F104, G104, Ab104, Bb104, C105, D105, Eb105, F105, G105, Ab105, Bb105, C106, D106, Eb106, F106, G106, Ab106, Bb106, C107, D107, Eb107, F107, G107, Ab107, Bb107, C108, D108, Eb108, F108, G108, Ab108, Bb108, C109, D109, Eb109, F109, G109, Ab109, Bb109, C110, D110, Eb110, F110, G110, Ab110, Bb110, C111, D111, Eb111, F111, G111, Ab111, Bb111, C112, D112, Eb112, F112, G112, Ab112, Bb112, C113, D113, Eb113, F113, G113, Ab113, Bb113, C114, D114, Eb114, F114, G114, Ab114, Bb114, C115, D115, Eb115, F115, G115, Ab115, Bb115, C116, D116, Eb116, F116, G116, Ab116, Bb116, C117, D117, Eb117, F117, G117, Ab117, Bb117, C118, D118, Eb118, F118, G118, Ab118, Bb118, C119, D119, Eb119, F119, G119, Ab119, Bb119, C120, D120, Eb120, F120, G120, Ab120, Bb120, C121, D121, Eb121, F121, G121, Ab121, Bb121, C122, D122, Eb122, F122, G122, Ab122, Bb122, C123, D123, Eb123, F123, G123, Ab123, Bb123, C124, D124, Eb124, F124, G124, Ab124, Bb124, C125, D125, Eb125, F125, G125, Ab125, Bb125, C126, D126, Eb126, F126, G126, Ab126, Bb126, C127, D127, Eb127, F127, G127, Ab127, Bb127, C128, D128, Eb128, F128, G128, Ab128, Bb128, C129, D129, Eb129, F129, G129, Ab129, Bb129, C130, D130, Eb130, F130, G130, Ab130, Bb130, C131, D131, Eb131, F131, G131, Ab131, Bb131, C132, D132, Eb132, F132, G132, Ab132, Bb132, C133, D133, Eb133, F133, G133, Ab133, Bb133, C134, D134, Eb134, F134, G134, Ab134, Bb134, C135, D135, Eb135, F135, G135, Ab135, Bb135, C136, D136, Eb136, F136, G136, Ab136, Bb136, C137, D137, Eb137, F137, G137, Ab137, Bb137, C138, D138, Eb138, F138, G138, Ab138, Bb138, C139, D139, Eb139, F139, G139, Ab139, Bb139, C140, D140, Eb140, F140, G140, Ab140, Bb140, C141, D141, Eb141, F141, G141, Ab141, Bb141, C142, D142, Eb142, F142, G142, Ab142, Bb142, C143, D143, Eb143, F143, G143, Ab143, Bb143, C144, D144, Eb144, F144, G144, Ab144, Bb144, C145, D145, Eb145, F145, G145, Ab145, Bb145, C146, D146, Eb146, F146, G146, Ab146, Bb146, C147, D147, Eb147, F147, G147, Ab147, Bb147, C148, D148, Eb148, F148, G148, Ab148, Bb148, C149, D149, Eb149, F149, G149, Ab149, Bb149, C150, D150, Eb150, F150, G150, Ab150, Bb150, C151, D151, Eb151, F151, G151, Ab151, Bb151, C152, D152, Eb152, F152, G152, Ab152, Bb152, C153, D153, Eb153, F153, G153, Ab153, Bb153, C154, D154, Eb154, F154, G154, Ab154, Bb154, C155, D155, Eb155, F155, G155, Ab155, Bb155, C156, D156, Eb156, F156, G156, Ab156, Bb156, C157, D157, Eb157, F157, G157, Ab157, Bb157, C158, D158, Eb158, F158, G158, Ab158, Bb158, C159, D159, Eb159, F159, G159, Ab159, Bb159, C160, D160, Eb160, F160, G160, Ab160, Bb160, C161, D161, Eb161, F161, G161, Ab161, Bb161, C162, D162, Eb162, F162, G162, Ab162, Bb162, C163, D163, Eb163, F163, G163, Ab163, Bb163, C164, D164, Eb164, F164, G164, Ab164, Bb164, C165, D165, Eb165, F165, G165, Ab165, Bb165, C166, D166, Eb166, F166, G166, Ab166, Bb166, C167, D167, Eb167, F167, G167, Ab167, Bb167, C168, D168, Eb168, F168, G168, Ab168, Bb168, C169, D169, Eb169, F169, G169, Ab169, Bb169, C170, D170, Eb170, F170, G170, Ab170, Bb170, C171, D171, Eb171, F171, G171, Ab171, Bb171, C172, D172, Eb172, F172, G172, Ab172, Bb172, C173, D173, Eb173, F173, G173, Ab173, Bb173, C174, D174, Eb174, F174, G174, Ab174, Bb174, C175, D175, Eb175, F175, G175, Ab175, Bb175, C176, D176, Eb176, F176, G176, Ab176, Bb176, C177, D177, Eb177, F177, G177, Ab177, Bb177, C178, D178, Eb178, F178, G178, Ab178, Bb178, C179, D179, Eb179, F179, G179, Ab179, Bb179, C180, D180, Eb180, F180, G180, Ab180, Bb180, C181, D181, Eb181, F181, G181, Ab181, Bb181, C182, D182, Eb182, F182, G182, Ab182, Bb182, C183, D183, Eb183, F183, G183, Ab183, Bb183, C184, D184, Eb184, F184, G184, Ab184, Bb184, C185, D185, Eb185, F185, G185, Ab185, Bb185, C186, D186, Eb186, F186, G186, Ab186, Bb186, C187, D187, Eb187, F187, G187, Ab187, Bb187, C188, D188, Eb188, F188, G188, Ab188, Bb188, C189, D189, Eb189, F189, G189, Ab189, Bb189, C190, D190, Eb190, F190, G190, Ab190, Bb190, C191, D191, Eb191, F191, G191, Ab191, Bb191, C192, D192, Eb192, F192, G192, Ab192, Bb192, C193, D193, Eb193, F193, G193, Ab193, Bb193, C194, D194, Eb194, F194, G194, Ab194, Bb194, C195, D195, Eb195, F195, G195, Ab195, Bb195, C196, D196, Eb196, F196, G196, Ab196, Bb196, C197, D197, Eb197, F197, G197, Ab197, Bb197, C198, D198, Eb198, F198, G198, Ab198, Bb198, C199, D199, Eb199, F199, G199, Ab199, Bb199, C200, D200, Eb200, F200, G200, Ab200, Bb200, C201, D201, Eb201, F201, G201, Ab201, Bb201, C202, D202, Eb202, F202, G202, Ab202, Bb202, C203, D203, Eb203, F203, G203, Ab203, Bb203, C204, D204, Eb204, F204, G204, Ab204, Bb204, C205, D205, Eb205, F205, G205, Ab205, Bb205, C206, D206, Eb206, F206, G206, Ab206, Bb206, C207, D207, Eb207, F207, G207, Ab207, Bb207, C208, D208, Eb208, F208, G208, Ab208, Bb208, C209, D209, Eb209, F209, G209, Ab209, Bb209, C210, D210, Eb210, F210, G210, Ab210, Bb210, C211, D211, Eb211, F211, G211, Ab211, Bb211, C212, D212, Eb212, F212, G212, Ab212, Bb212, C213, D213, Eb213, F213, G213, Ab213, Bb213, C214, D214, Eb214, F214, G214, Ab214, Bb214, C215, D215, Eb215, F215, G215, Ab215, Bb215, C216, D216, Eb216, F216, G216, Ab216, Bb216, C217, D217, Eb217, F217, G217, Ab217, Bb217, C218, D218, Eb218, F218, G218, Ab218, Bb218, C219, D219, Eb219, F219, G219, Ab219, Bb219, C220, D220, Eb220, F220, G220, Ab220, Bb220, C221, D221, Eb221, F221, G221, Ab221, Bb221, C222, D222, Eb222, F222, G222, Ab222, Bb222, C223, D223, Eb223, F223, G223, Ab223, Bb223, C224, D224, Eb224, F224, G224, Ab224, Bb224, C225, D225, Eb225, F225, G225, Ab225, Bb225, C226, D226, Eb226, F226, G226, Ab226, Bb226, C227, D227, Eb227, F227, G227, Ab227, Bb227, C228, D228, Eb228, F228, G228, Ab228, Bb228, C229, D229, Eb229, F229, G229, Ab229, Bb229, C230, D230, Eb230, F230, G230, Ab230, Bb230, C231, D231, Eb231, F231, G231, Ab231, Bb231, C232, D232, Eb232, F232, G232, Ab232, Bb232, C233, D233, Eb233, F233, G233, Ab233, Bb233, C234, D234, Eb234, F234, G234, Ab234, Bb234, C235, D235, Eb235, F235, G235, Ab235, Bb235, C236, D236, Eb236, F236, G236, Ab236, Bb236, C237, D237, Eb237, F237, G237, Ab237, Bb237, C238, D238, Eb238, F238, G238, Ab238, Bb238, C239, D239, Eb239, F239, G239, Ab239, Bb239, C240, D240, Eb240, F240, G240, Ab240, Bb240, C241, D241, Eb241, F241, G241, Ab241, Bb241, C242, D242, Eb242, F242, G242, Ab242, Bb242, C243, D243, Eb243, F243, G243, Ab243, Bb243, C244, D244, Eb244, F244, G244, Ab244, Bb244, C245, D245, Eb245, F245, G245, Ab245, Bb245, C246, D246, Eb246, F246, G246, Ab246, Bb246, C247, D247, Eb247, F247, G247, Ab247, Bb247, C248, D248, Eb248, F248, G248, Ab248, Bb248, C249, D249, Eb249, F249, G249, Ab249, Bb249, C250, D250, Eb250, F250, G250, Ab250, Bb250, C251, D251, Eb251, F251, G251, Ab251, Bb251, C252, D252, Eb252, F252, G252, Ab252, Bb252, C253, D253, Eb253, F253, G253, Ab253, Bb253, C254, D254, Eb254, F254, G254, Ab254, Bb254, C255, D255, Eb255, F255, G255, Ab255, Bb255, C256, D256, Eb256, F256, G256, Ab256, Bb256, C257, D257, Eb257, F257, G257, Ab257, Bb257, C258, D258, Eb258, F258, G258, Ab258, Bb258, C259, D259, Eb259, F259, G259, Ab259, Bb259, C260, D260, Eb260, F260, G260, Ab260, Bb260, C261, D261, Eb261, F261, G261, Ab261, Bb261, C262, D262, Eb262, F262, G262, Ab262, Bb262, C263, D263, Eb263, F263, G263, Ab263, Bb263, C264, D264, Eb264, F264, G264, Ab264, Bb264, C265, D265, Eb265, F265, G265, Ab265, Bb265, C266, D266, Eb266, F266, G266, Ab266, Bb266, C267, D267, Eb267, F267, G267, Ab267, Bb267, C268, D268, Eb268, F268, G268, Ab268, Bb268, C269, D269, Eb269, F269, G269, Ab269, Bb269, C270, D270, Eb270, F270, G270, Ab270, Bb270, C271, D271, Eb271, F271, G271, Ab271, Bb271, C272, D272, Eb272, F272, G272, Ab272, Bb272, C273, D273, Eb273, F273, G273, Ab273, Bb273, C274, D274, Eb274, F274, G274, Ab274, Bb274, C275, D275, Eb275, F275, G275, Ab275, Bb275, C276, D276, Eb276, F276, G276, Ab276, Bb276, C277, D277, Eb277, F277, G277, Ab277, Bb277, C278, D278, Eb278, F278, G278, Ab278, Bb278, C279, D279, Eb279, F279, G279, Ab279, Bb279, C280, D280, Eb280, F280, G280, Ab280, Bb280, C281, D281, Eb281, F281, G281, Ab281, Bb281, C282, D282, Eb282, F282, G282, Ab282, Bb282, C283, D283, Eb283, F283, G283, Ab283, Bb283, C284, D284, Eb284, F284, G284, Ab284, Bb284, C285, D285, Eb285, F285, G285, Ab285, Bb285, C286, D286, Eb286, F286, G286, Ab286, Bb286, C287, D287, Eb287, F287, G287, Ab287, Bb287, C288, D288, Eb288, F288, G288, Ab288, Bb288, C289, D289, Eb289, F289, G289, Ab289, Bb289, C290, D290, Eb290, F290, G290, Ab290, Bb290, C291, D291, Eb291, F291, G291, Ab291, Bb291, C292, D292, Eb292, F292, G292, Ab292, Bb292, C293, D293, Eb293, F293, G293, Ab293, Bb293, C294, D294, Eb294, F294, G294, Ab294, Bb294, C295, D295, Eb295, F295, G295, Ab295, Bb295, C296, D296, Eb296, F296, G296, Ab296, Bb296, C297, D297, Eb297, F297, G297, Ab297, Bb297, C298, D298, Eb298, F298, G298, Ab298, Bb298, C299, D299, Eb299, F299, G299, Ab299, Bb299, C300, D300, Eb300, F300, G300, Ab300, Bb300, C301, D301, Eb301, F301, G301, Ab301, Bb301, C302, D302, Eb302, F302, G302, Ab302, Bb302, C303, D303, Eb303, F303, G303, Ab303, Bb303, C304, D304, Eb304, F304, G304, Ab304, Bb304, C305, D305, Eb305, F305, G305, Ab305, Bb305, C306, D306, Eb306, F306, G306, Ab306, Bb306, C307, D307, Eb307, F307, G307, Ab307, Bb307, C308, D308, Eb308, F308, G308, Ab308, Bb308, C309, D309, Eb309, F309, G309, Ab309, Bb309, C310, D310, Eb310, F310, G310, Ab310, Bb310, C311, D311, Eb311, F311, G311, Ab311, Bb311, C312, D312, Eb312, F312, G312, Ab312, Bb312, C313, D313, Eb313, F313, G313, Ab313, Bb313, C314, D314, Eb314, F314, G314, Ab314, Bb314, C315, D315, Eb315, F315, G315, Ab315, Bb315, C316, D316, Eb316, F316, G316, Ab316, Bb316, C317, D317, Eb317, F317, G317, Ab317, Bb317, C318, D318, Eb318, F318, G318, Ab318, Bb318, C319, D319, Eb319, F319, G319, Ab319, Bb319, C320, D320, Eb320, F320, G320, Ab320, Bb320, C321, D321, Eb321, F321, G321, Ab321, Bb321, C322, D322, Eb322, F322, G322, Ab322, Bb322, C323, D323, Eb323, F323, G323, Ab323, Bb323, C324, D324, Eb324, F324, G324, Ab324, Bb324, C325, D325, Eb325, F325, G325, Ab325, Bb325, C326, D326, Eb326, F326, G326, Ab326, Bb326, C327, D327, Eb327, F327, G327, Ab327, Bb327, C328, D328, Eb328, F328, G328, Ab328, Bb328, C329, D329, Eb329, F329, G329, Ab329, Bb329, C330, D330, Eb330, F330, G330, Ab330, Bb330, C331, D331, Eb331, F331, G331, Ab331, Bb331, C332, D332, Eb332, F332, G332, Ab332, Bb332, C333, D333, Eb333, F333, G333, Ab333, Bb333, C334, D334, Eb334, F334, G334, Ab334, Bb334, C335, D335, Eb335, F335, G335, Ab335, Bb335, C336, D336, Eb336, F336, G336, Ab336, Bb336, C337, D337, Eb337, F337, G337, Ab337, Bb337, C338, D338, Eb338, F338, G338, Ab338, Bb338, C339, D339, Eb339, F339, G339, Ab339, Bb339, C340, D340, Eb340, F340, G340, Ab340, Bb340, C341, D341, Eb341, F341, G341, Ab341, Bb341, C342, D342, Eb342, F342, G342, Ab342, Bb342, C343, D343, Eb343, F343, G343, Ab343, Bb343, C344, D344, Eb344, F344, G344, Ab344, Bb344, C345, D345, Eb345, F345, G345, Ab345, Bb345, C346, D346, Eb346, F346, G346, Ab346, Bb346, C347, D347, Eb347, F347, G347, Ab347, Bb347, C348, D348, Eb348, F348, G348, Ab348, Bb348, C349, D349, Eb349, F349, G349, Ab349, Bb349, C350, D350, Eb350, F350, G350, Ab350, Bb350, C351, D351, Eb351, F351, G351, Ab351, Bb351, C352, D352, Eb352, F352, G352, Ab352, Bb352, C353, D353, Eb353, F353, G353, Ab353, Bb353, C354, D354, Eb354, F354, G354, Ab354, Bb354, C355, D355, Eb355, F355, G355, Ab355, Bb355, C356, D356, Eb356, F356, G356, Ab356, Bb356, C357, D357, Eb357, F357, G357, Ab357, Bb357, C358, D358, Eb358, F358, G358, Ab358, Bb358, C359, D359, Eb359, F359, G359, Ab359, Bb359, C360, D360, Eb360, F