

Essential Scales - Minor

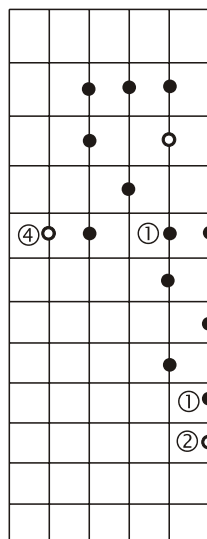
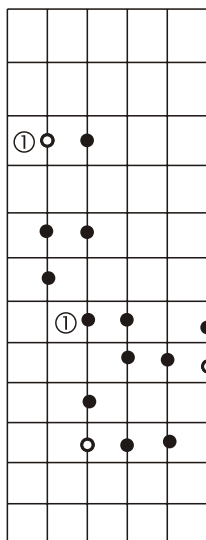
There are three kinds of minor scales the natural minor, the melodic minor and the harmonic minor. The natural minor follows the minor key signature, i.e in Cm (natural) we use the flat 3rd, the flat 7th and the flat 6th

The harmonic minor is changed by using the flat 3rd and flat 6th.

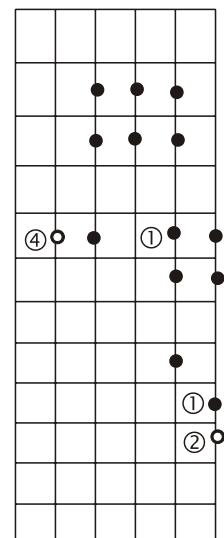
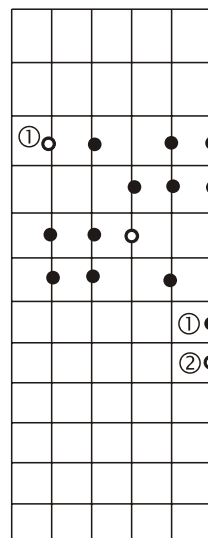
The melodic uses only the flat 3rd.

The natural minor is the relative minor to the major
As the natural minor consists of the same notes to it's relative major there are no patterns here - refer to essential major and start the scale three steps below major.

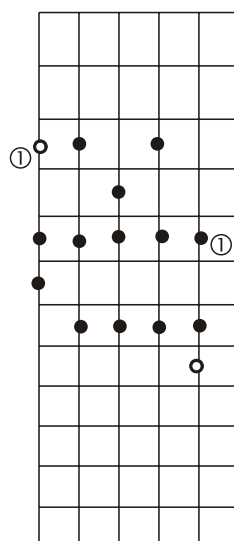
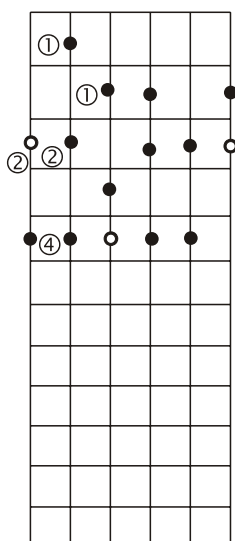
○ = root 5th String Melodic Minor



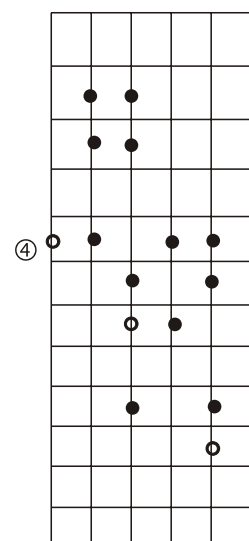
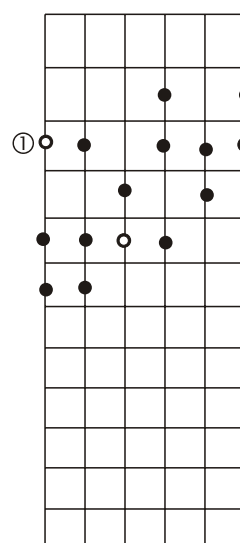
5th String Harmonic Minor



6th String Melodic Minor



6th String Harmonic Minor



The above scales should be played up and down using alternate picking.

Practice moving the scale patterns to different parts of the fretboard.

The melodic minor is often known as the jazz minor